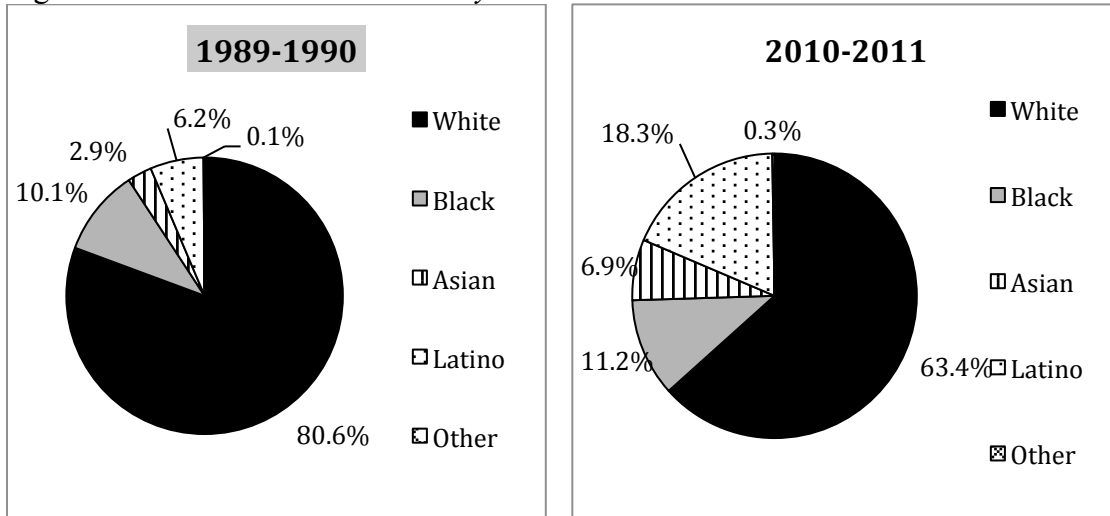


Long Island (Suffolk and Nassau Counties), NY Metro Summary

Enrollment

- The share of white students enrolled in public schools almost declined by 18% points, from 80.6% in 1989-1990 to 63.4% in 2010-2011.
- The overall share of black student enrollment remained stable over the last 20 years.
- The Asian share of enrollment increased by 140% and Latino share of enrollment increased by 300% since 1989.

Figure 1 *Public School Enrollment by Race*



Note: American Indian is included in "other". Total island enrollment in 1989 was 387,540. In 2010, total enrollment was 463,031.

Source: U.S. Department of Education, National Center for Education Statistics, Common Core of Data (CCD), Public Elementary/Secondary School Universe Survey Data

Concentration

- The percentage of multiracial schools across the island—schools in which at least one-tenth of the students represent at least three racial groups—has increased over the last two decades but so has the percentage of segregated schools.
- In 1989, less than 4% of schools were intensely-segregated schools, where less than 10% are white students. In 2010, 11% were such schools.
- Over the last 20 years, the percentage of schools majority-minority schools – those that are 50-100% minority students, has overly doubled.

Table 1 *Number and Percentage of Multi-Racial and Minority Schools*

	Total Schools	% of Multi- Racial Schools	% of 50- 100% Minority Schools	% of 90- 100% Minority Schools	% of 99- 100% Minority Schools
Long Island, NY					
1989-1990	633	12.2%	12.3%	3.6%	2.7%
1999-2000	647	19.6%	15.9%	5.7%	2.8%
2010-2011	668	25.9%	26.6%	11.2%	3.7%

Note Blank cells represent no schools. Minority school represents black, Latino, American Indian, and Asian students. Multi-racial schools are those with any three races representing 10% or more of the total student enrollment respectively.

Source: U.S. Department of Education, National Center for Education Statistics, Common Core of Data (CCD), Public Elementary/Secondary School Universe Survey Data

- As the minority concentration increases, so do poverty concentration. Nearly triple the proportion of low-income students for the entire island in 1999 and in 2010 was in intensely-segregated schools.

Table 2 *Percentage of Students who are Low-Income in Multi-Racial and Minority Schools*

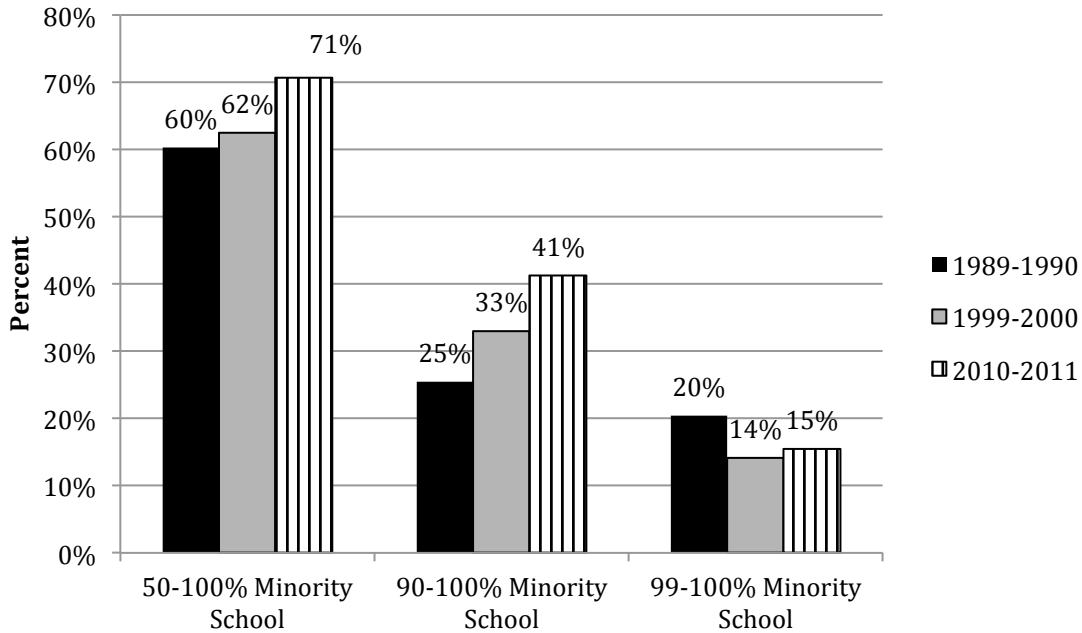
	Overall % Low- Income Island	% Low- Income in Multi -Racial Schools	% Low- Income in 50-100% Minority Schools	% Low- Income in 90-100% Minority Schools	% Low- Income in 99-100% Minority Schools
Long Island, NY					
1999-2000	16.7%	34.0%	50.3%	54.0%	73.8%
2010-2011	21.8%	30.7%	45.6%	58.7%	64.4%

Note: Blank cells represent no schools. Minority school represents black, Latino, American Indian, and Asian students. Multiracial schools are those with any three races representing 10% or more of the total student enrollment respectively.

Source: U.S. Department of Education, National Center for Education Statistics, Common Core of Data (CCD), Public Elementary/Secondary School Universe Survey Data

- Over the last two decades, the share of black students who were enrolled in majority-minority and intensely-segregated schools has steadily increased.
- Over two out of five black students across the island attended a school with less than 10% of white students in 2010, even though there are 63% of white students across the entire island.
- Around 70% of black students attended a school with less than 50% white students in 2010.

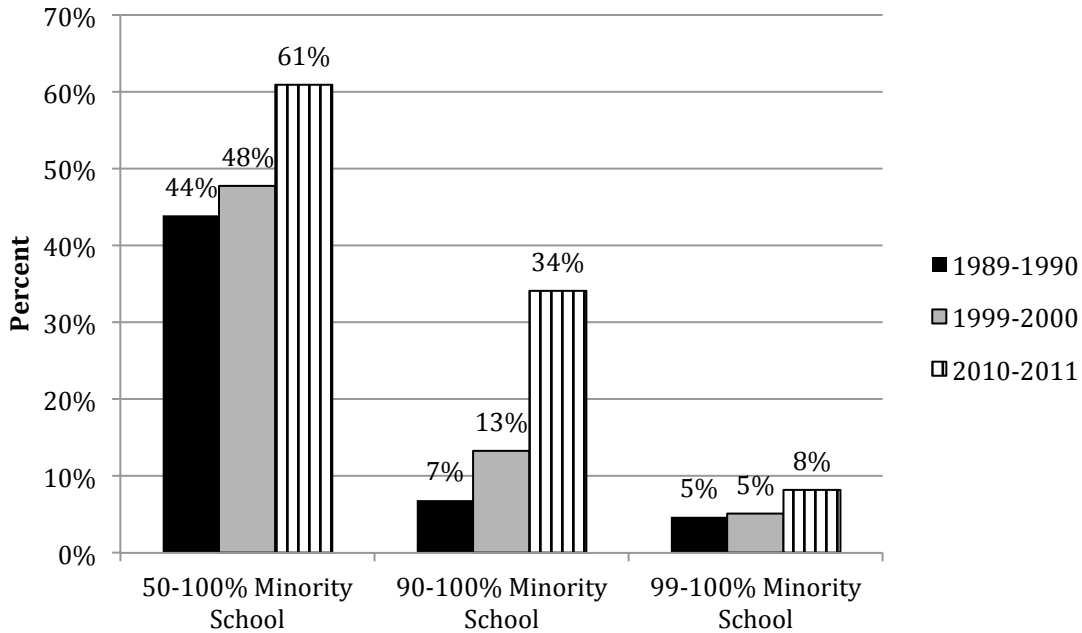
Figure 2 *Black Students in Minority Segregated Schools*



Note: Minority school represents black, Latino, American Indian, and Asian students.
Source: U.S. Department of Education, National Center for Education Statistics, Common Core of Data (CCD), Public Elementary/Secondary School Universe Survey Data

- Similarly, over the last two decades, the share of Latino students who were enrolled in majority-minority and intensely-segregated schools has steadily increased.
- Over one out of three Latino students across the island attended a school with less than 10% of white students in 2010, even though there are 63% of white students across the entire island.
- Nearly two out of three Latino students attended a school with less than 50% white students in 2010.

Figure 3 *Latino Students in Minority Segregated Schools*

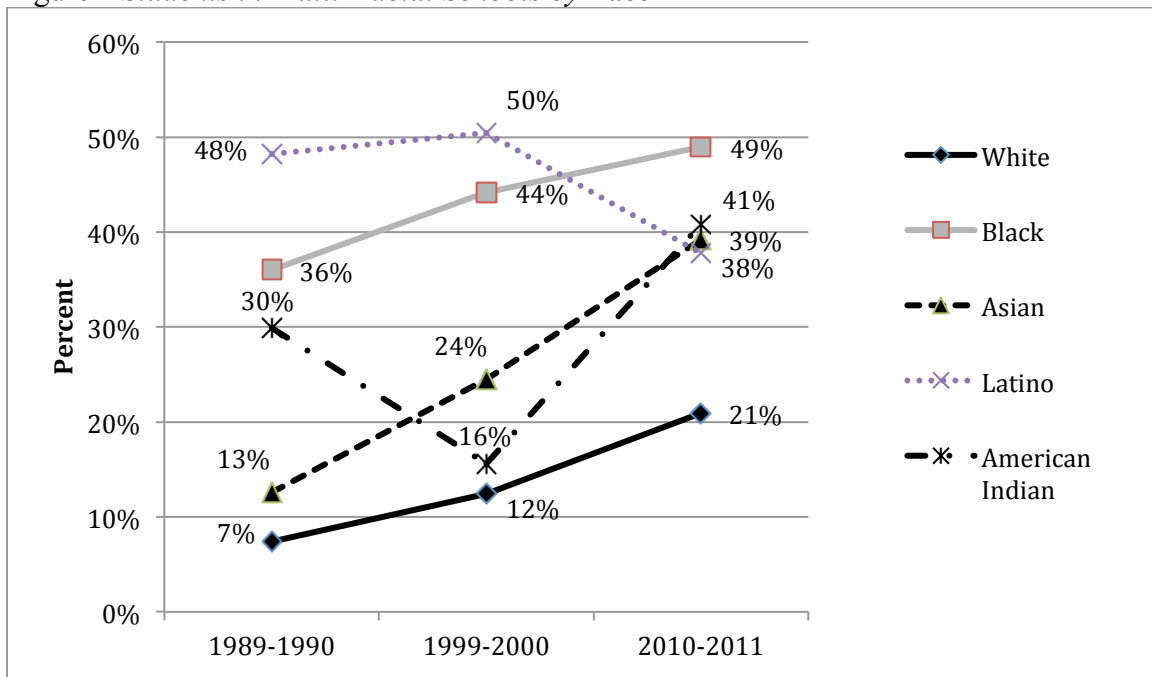


Note: Minority school represents black, Latino, American Indian, and Asian students.

Source: U.S. Department of Education, National Center for Education Statistics, Common Core of Data (CCD), Public Elementary/Secondary School Universe Survey Data

- Since 1989, the proportion Latino attending multiracial schools—those that have any three races representing at least one-tenth of the total school enrollment—have decreased, as the proportion black, Asian, and white students attending such schools have increased.
- In 2010-2011, only 21% of white students attended multiracial schools, but nearly a half of black students, and over a third of Latinos, Asians and American Indians attended such schools.

Figure 4 *Students in Multi-Racial Schools by Race*



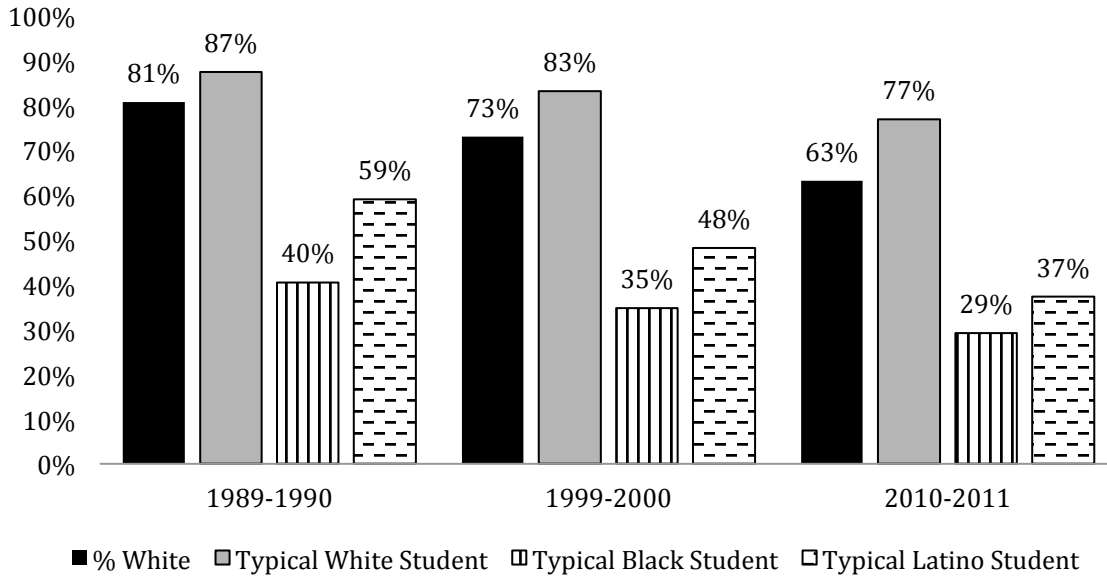
Note: Multi-racial schools are those with any three races representing 10% or more of the total student enrollment respectively.

Source: U.S. Department of Education, National Center for Education Statistics, Common Core of Data (CCD), Public Elementary/Secondary School Universe Survey Data

Exposure

- White students are overexposed to other white students, and this disproportion has widened instead of narrowed over the last 20 years, as proportion white has declined faster than white isolation rates.
- Over the last two decades, the typical black student, followed by the typical Latino, remains underexposed to white students, and this limited contact has decreased as the proportionate white decreased.

Figure 5 *White Students in School Attended by Typical Student of Each Race*

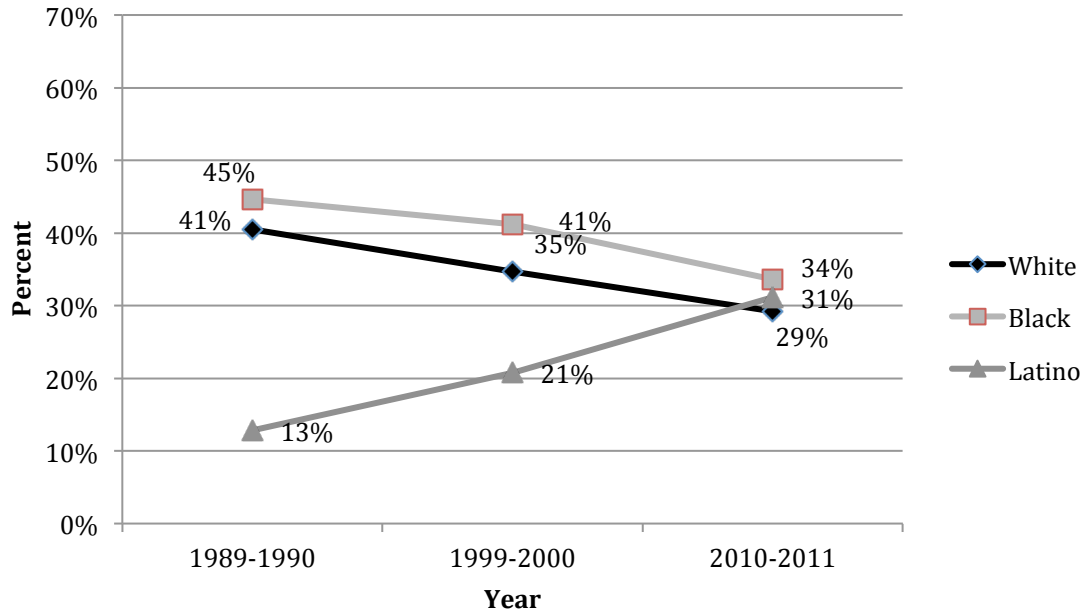


Note: Less than 5% Latino enrollment across time periods.

Source: U.S. Department of Education, National Center for Education Statistics, Common Core of Data (CCD), Public Elementary/Secondary School Universe Survey Data

- The racial composition of the school that a typical black student attends has shifted over the last two decades, changing to less white and black, but more Latino.
- Despite the fact that the overall island share of enrollment is 63% white and 11% black, the typical black student attended a school in 2010 with less than 30% white and 34% black classmates.

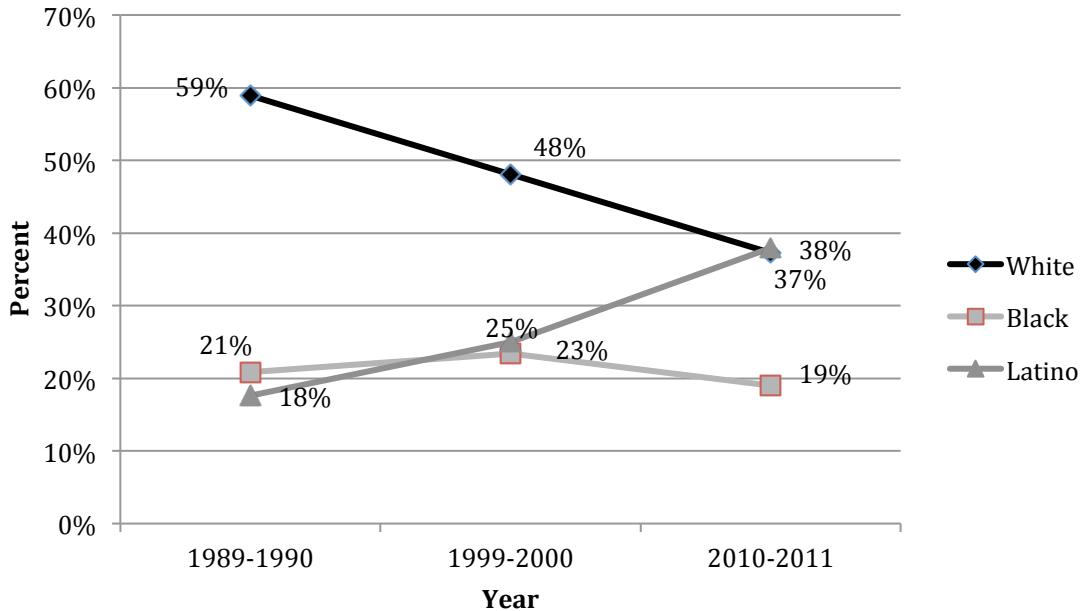
Figure 6 *Racial Composition of School Attended by Typical Black Student*



Source: U.S. Department of Education, National Center for Education Statistics, Common Core of Data (CCD), Public Elementary/Secondary School Universe Survey Data

- The racial composition of the school that a typical Latino student attends has shifted over the last two decades as well, changing to less white and black, but more Latino.
- Despite the fact that the overall island share of enrollment is 63% white and 18% Latino, the typical Latino student attended a school in 2010 with 38% white and 37% Latino classmates.

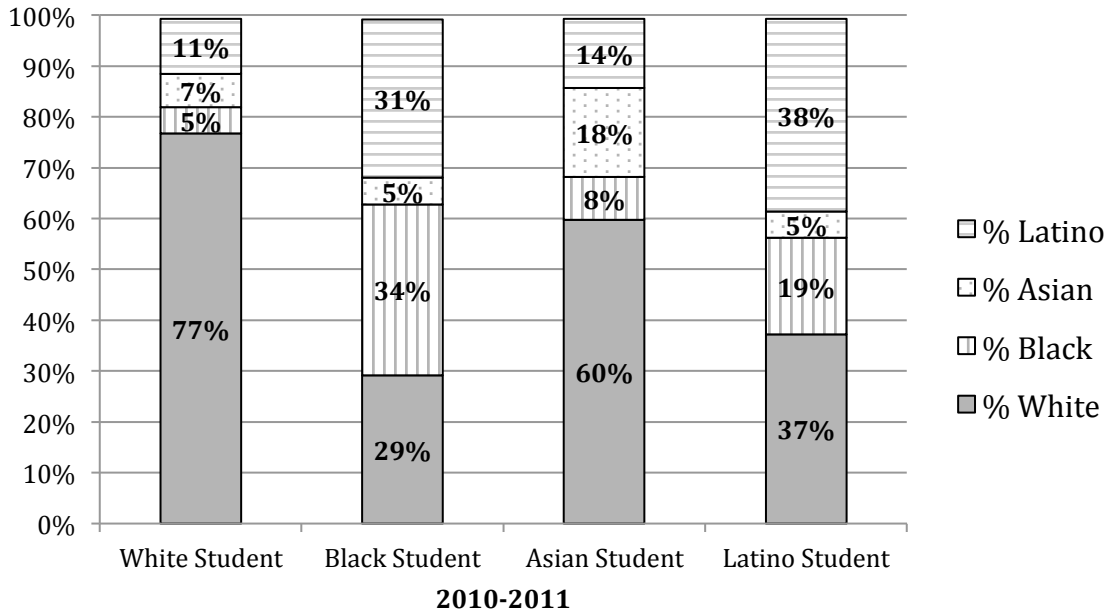
Figure 7 *Racial Composition of School Attended by Typical Latino Student*



Source: U.S. Department of Education, National Center for Education Statistics, Common Core of Data (CCD), Public Elementary/Secondary School Universe Survey Data

- In 2010, the typical white student attended a school that is predominantly white with small proportions of black, Asian, and Latino students.
- The typical black student is enrolled in a school with less than a third of white students, even though the proportion of white students on the island was 63%.
- The typical Asian student attended school with a plurality of white students (60%) and almost one-fifth of other Asian students.
- Similar to the typical black student, the typical Latino student attended school with majority minority students.

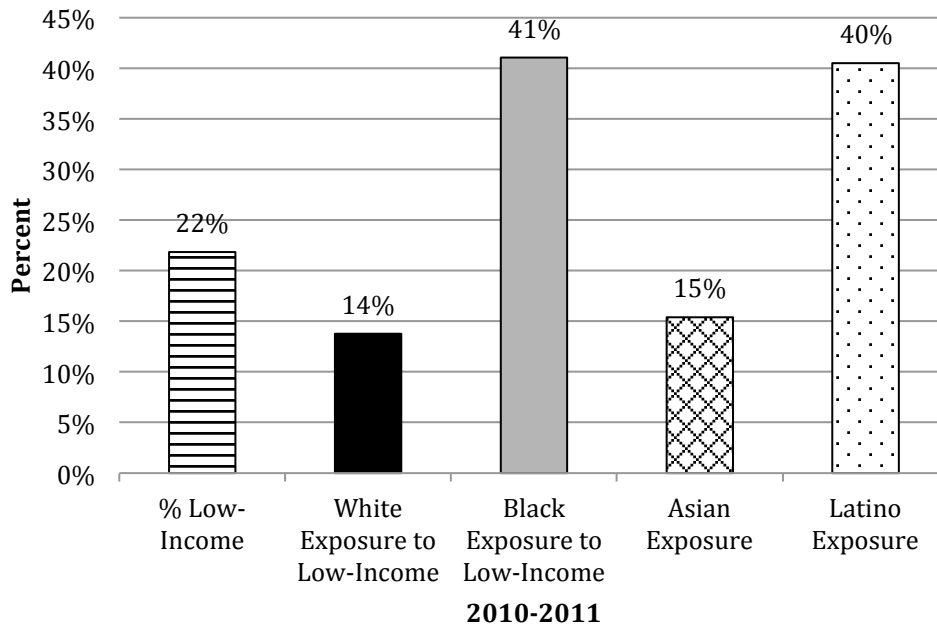
Figure 8 *Racial Composition of School Attended by Typical Student by Race*



Source: U.S. Department of Education, National Center for Education Statistics, Common Core of Data (CCD), Public Elementary/Secondary School Universe Survey

- In 2010, the typical black and Latino student attended school with nearly double the percentage of low-income students in the island and close to triple the percentage than the typical white and Asian student.
- The typical white student attended a school with only 14% low-income students, 8% lower than the average proportion of low-income students in the island. This finding is similar to the typical Asian student.
- This data show the disproportionate distribution of low-income students to schools where black and Latino students attend.

Figure 9 *Exposure to Low-Income Students by Race*



Source: U.S. Department of Education, National Center for Education Statistics, Common Core of Data (CCD), Public Elementary/Secondary School Universe Survey Data

Evenness

- Over the last two decades, the average school remains 30% less diverse than the entire islandopolitan area, indicating a high degree of persisting segregation.
- This uneven distribution of racial groups throughout the area’s public schools occurred mostly between schools districts (90% average) rather than within school districts, suggesting the need for interdistrict policies for racial integration.

Table 4 *Multi-Group Entropy Index Values, Overall and Within/Between School Districts*

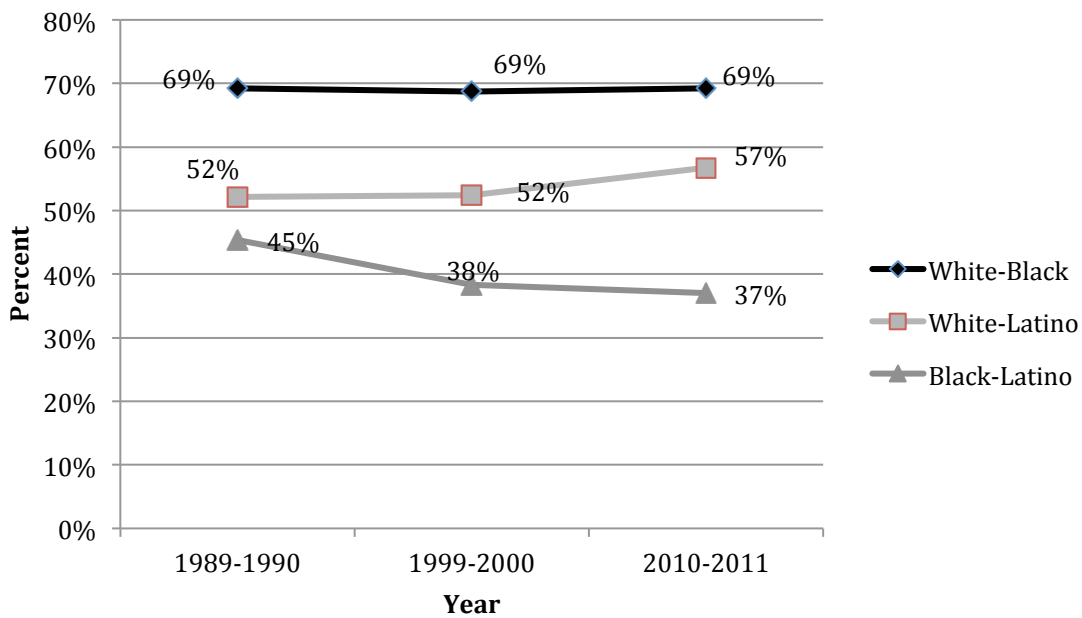
	H	HW	HB
Long Island, NY			
1989-1990	0.31	0.02	0.29
1999-2000	0.29	0.02	0.27
2010-2011	0.29	0.03	0.26

Note: H=Multi-Group Entropy Index or Theil’s H. HW= the degree of un/evenness (H) that is within (W) districts. HB= the degree of un/evenness (H) that is between (B) districts.

Source: U.S. Department of Education, National Center for Education Statistics, Common Core of Data (CCD), Public Elementary/Secondary School Universe Survey Data

- The uneven distribution of white and black students across schools on the island has been persistently high over the last two decades.
- Segregation between white-Latino students, however, has increased significantly since 1999.
- Black-Latino evenness is relatively low in comparison and slightly decreasing, indicating a growing concentration of black and Latino students in schools over the last 20 years..

Figure 10 *Differential Distribution (Dissimilarity) of Racial Students across Public Schools*



Source: U.S. Department of Education, National Center for Education Statistics, Common Core of Data (CCD), Public Elementary/Secondary School Universe Survey Data