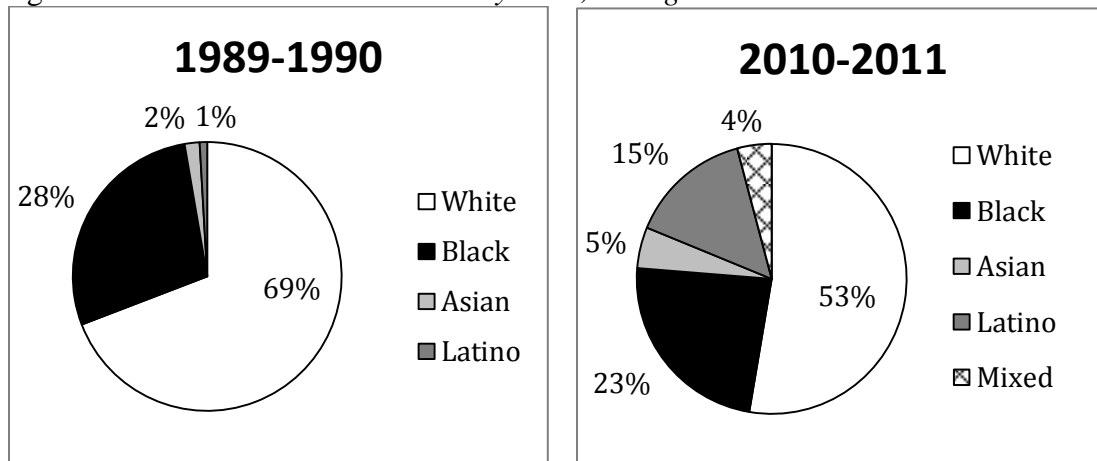


### RALEIGH-CARY METRO AREA<sup>1</sup>

#### Enrollment

- Both the black share of enrollment and the white share of enrollment decreased in metro Raleigh from 1989 to 2010; the Latino and Asian shares of enrollment increased.
- The metro's student enrollment more than doubled from 82,842 students in 1989 to 191,520 students in 2010.

Figure 1 – Public School Enrollment by Race, Raleigh Metro



Note: American Indian is less than 1% of total enrollment. Total CBSA enrollment in 1989 was 82,842. In 2010, total enrollment was 191,520.

Source: U.S. Department of Education, National Center for Education Statistics, Common Core of Data (CCD), Public Elementary/Secondary School Universe Survey Data

<sup>1</sup> We use the term “Raleigh Metro” to refer to the the Raleigh-Cary metropolitan area. In this report our data includes only the districts in this metropolitan area that are located in the state of North Carolina. The 2010 MSA boundaries included Franklin County, Johnston County, and Wake County.

- In both urban and suburban schools, the white share of enrollment decreased but remained the largest share of enrollment, though by a larger margin in suburban schools where white students accounted for 56.9% of students than in urban schools where they comprised 43.8% of the 2010 student enrollment.
- The black share of enrollment increased in urban schools but decreased in suburban schools; black students accounted for a larger share of the enrollment in urban schools than in suburban schools in 2010.
- The Asian and Latino shares of enrollment increased in both urban and suburban schools and accounted for similar proportions of the enrollment in both types of schools in 2010; Asians accounted for about 5-7% and Latinos accounted for about 14%.

Table 1 – *Public School Enrollment by Race in Urban and Suburban Schools, Raleigh Metro*

	Urban Schools					Suburban Schools				
	White	Black	Asian	Latino	Other	White	Black	Asian	Latino	Other
<b>Raleigh Metro</b>										
1989-1990	68.1%	27.5%	3.4%	0.8%	0.2%	74.1%	24.6%	0.6%	0.5%	0.2%
1999-2000	61.8%	29.0%	5.2%	3.8%	0.2%	69.5%	24.3%	2.6%	3.4%	0.2%
2010-2011	43.8%	29.6%	7.2%	14.5%	4.9%	56.9%	19.1%	5.0%	14.1%	4.9%

*Note:* Urban schools refer to those inside an urbanized area and a principal city. Suburban schools refer to those inside an urbanized area but outside a principal city. Other includes American Indian students and students who identify with two or more races. Data comprises schools open 1989-2010, 1989-1999-2010, 1999-2010, and only 2010. We apply 2010 boundary codes to all years.

*Source:* U.S. Department of Education, National Center for Education Statistics, Common Core of Data (CCD), Public Elementary/Secondary School Universe Survey Data

**Concentration**

- Since 1989 when fewer than 1% of metro Raleigh’s schools were multiracial, the metro has experienced significant growth in its share of multiracial schools, which accounted for more than two-thirds of all of the metro’s schools in 2010.
- The share of majority minority schools quadrupled from 1989 to 2010, jumping from 10.6% to 41.3%.
- The share of intensely segregated schools has remained small and fairly stable at around 2-3%.
- The share of apartheid schools in metro Raleigh has also remained very low (0.9%).

Table 2 – *Multiracial and Minority Segregated Schools, Raleigh Metro*

	<b>Total Schools</b>	<b>% of Multiracial Schools</b>	<b>% of 50-100% Minority Schools</b>	<b>% of 90-100% Minority Schools</b>	<b>% of 99-100% Minority Schools</b>
<b>Raleigh Metro</b>					
1989-1990	113	0.9%	10.6%	NS	NS
1999-2000	160	14.4%	19.4%	1.9%	0.6%
2010-2011	235	69.4%	41.3%	2.6%	0.9%

*Note:* NS = No Schools. Multiracial schools are those with any three races representing 10% or more of the total student enrollment.

*Source:* U.S. Department of Education, National Center for Education Statistics, Common Core of Data (CCD), Public Elementary/Secondary School Universe Survey Data

- The share of low-income students in metro Raleigh has increased over the last decade to 34.7% in 2010.
- The share of low-income students in all types of minority segregated schools except apartheid schools was higher than the overall share of low-income students in the metro area in 2010.

Table 3 – *Students Who Are Low-Income in Minority Segregated Schools, Raleigh Metro*

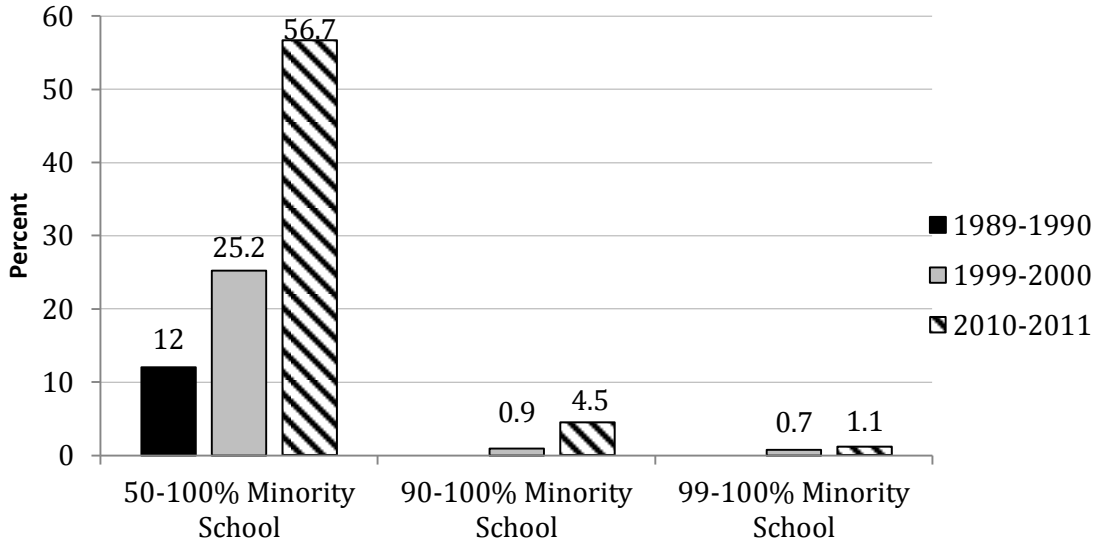
	<b>Overall % Low-Income in Metro</b>	<b>% Low-Income in 50-100% Minority Schools</b>	<b>% Low-Income in 90-100% Minority Schools</b>	<b>% Low-Income in 99-100% Minority Schools</b>
<b>Raleigh Metro</b>				
1999-2000	25.1%	44.8%	NS	NS
2010-2011	34.7%	46.8%	56.3%	18.1%

*Note:* NS = No Schools. Minority school represents black, Latino, American Indian, and Asian students. Multiracial schools are those with any three races representing 10% or more of the total student enrollment.

*Source:* U.S. Department of Education, National Center for Education Statistics, Common Core of Data (CCD), Public Elementary/Secondary School Universe Survey Data

- The share of black students in majority minority schools has increased over the last two decades such that more than half of the black students in metro Raleigh attended a school that was majority minority in 2010.

Figure 2 – Black Students in Minority Segregated Schools, Raleigh Metro

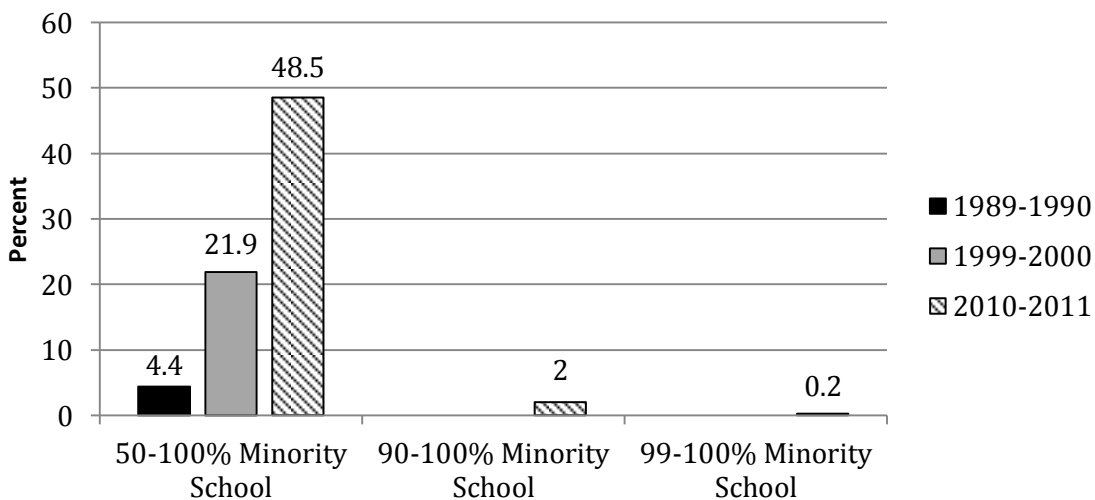


Note: Minority school represents black, Latino, American Indian, and Asian students.

Source: U.S. Department of Education, National Center for Education Statistics, Common Core of Data (CCD), Public Elementary/Secondary School Universe Survey Data

- The share of Latino students attending majority minority schools has increased over the last two decades, such that almost half of Latino students attended majority minority schools in 2010.

Figure 3 – Latino Students in Minority Segregated Schools, Raleigh Metro

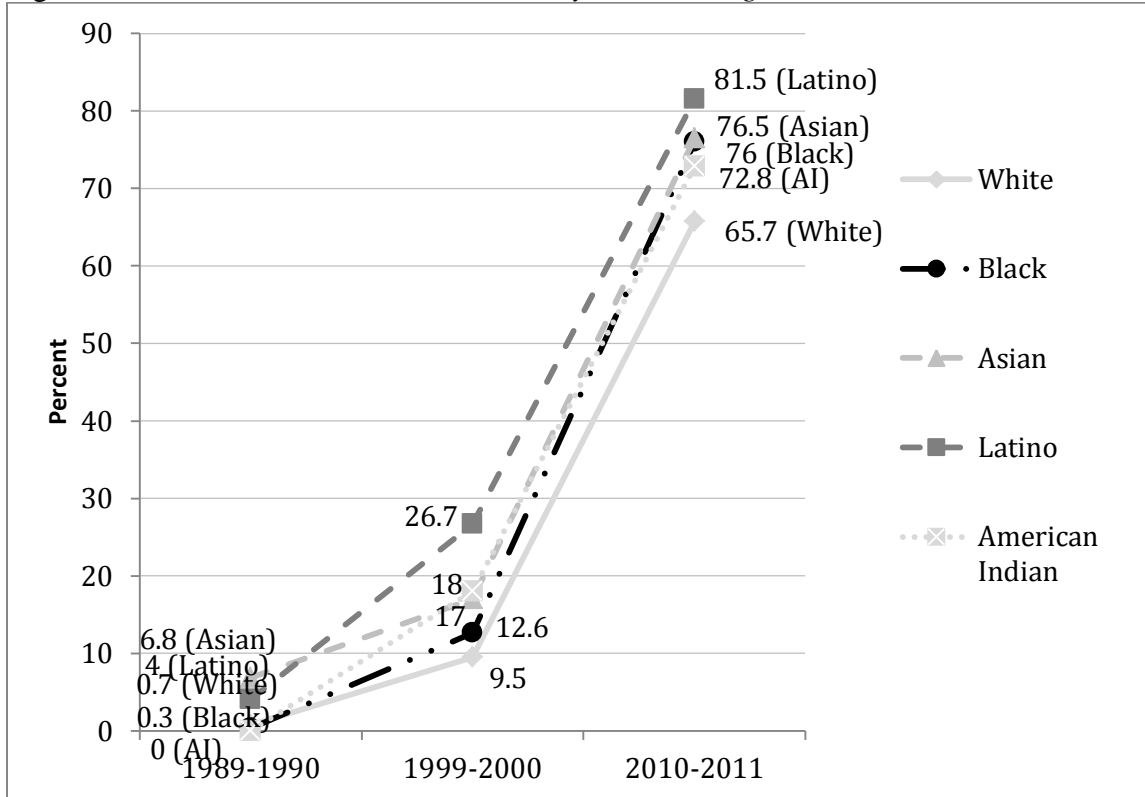


Note: Minority school represents black, Latino, American Indian, and Asian students.

Source: U.S. Department of Education, National Center for Education Statistics, Common Core of Data (CCD), Public Elementary/Secondary School Universe Survey Data

- In 2010, between 65% and 82% of students in each racial group attended multiracial schools in metro Raleigh. This is an increase from the previous two decades; in fact, only one decade earlier, closer to 10-25% of each racial group attended such schools.

Figure 4 – Students in Multiracial Schools by Race, Raleigh Metro



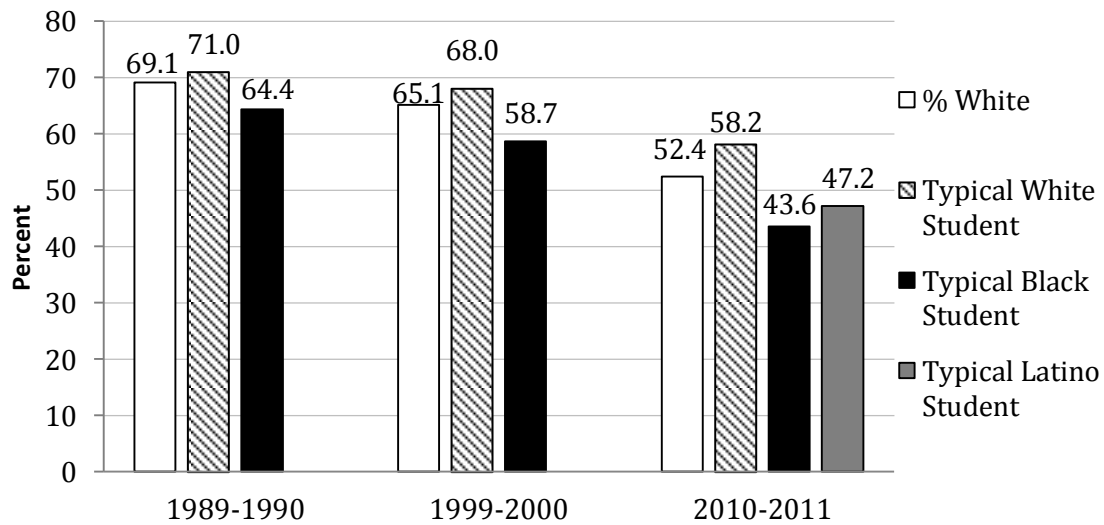
Note: Multiracial schools are those with any three races representing 10% or more of the total student enrollment.

Source: U.S. Department of Education, National Center for Education Statistics, Common Core of Data (CCD), Public Elementary/Secondary School Universe Survey Data

**Exposure**

- In all three decades, the typical white student in metro Raleigh attended a school with a slightly larger share of white students than the overall share of the metro population while the typical black student’s school had a smaller share of white students than the overall share of the metro population; the same was true for Latino students in 2010. These differences are modest in size.
- In 2010, the typical black student was least exposed to white students and attended a school that had only 43.6% white students versus the typical Latino student whose school had 47.2% white students.
- The gap in the typical black student’s exposure to white students versus the white share of enrollment has grown larger over time.

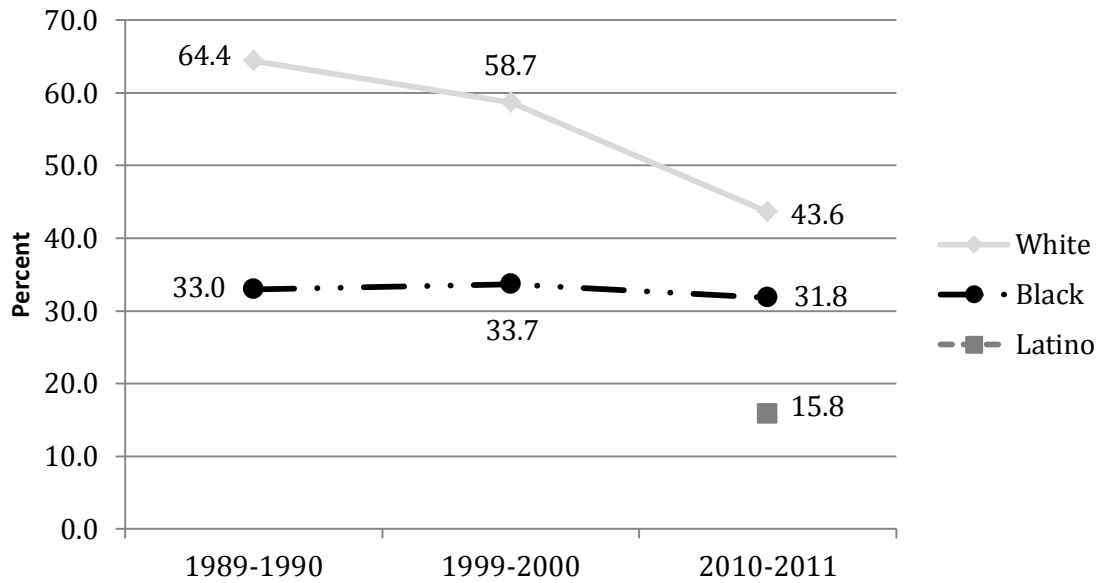
Figure 5 – *White Students in School Attended by Typical Student of Each Race, Raleigh Metro*



Source: U.S. Department of Education, National Center for Education Statistics, Common Core of Data (CCD), Public Elementary/Secondary School Universe Survey Data

- In the past, the typical black student attended a school that was majority white; by 2010, the typical black student’s school had become less white, though white students still accounted for the largest racial group.
- In 2010, black students accounted for nearly a third of the student enrollment in the typical black student’s school, and the school had a notable Latino presence at 15.8% of the enrollment.

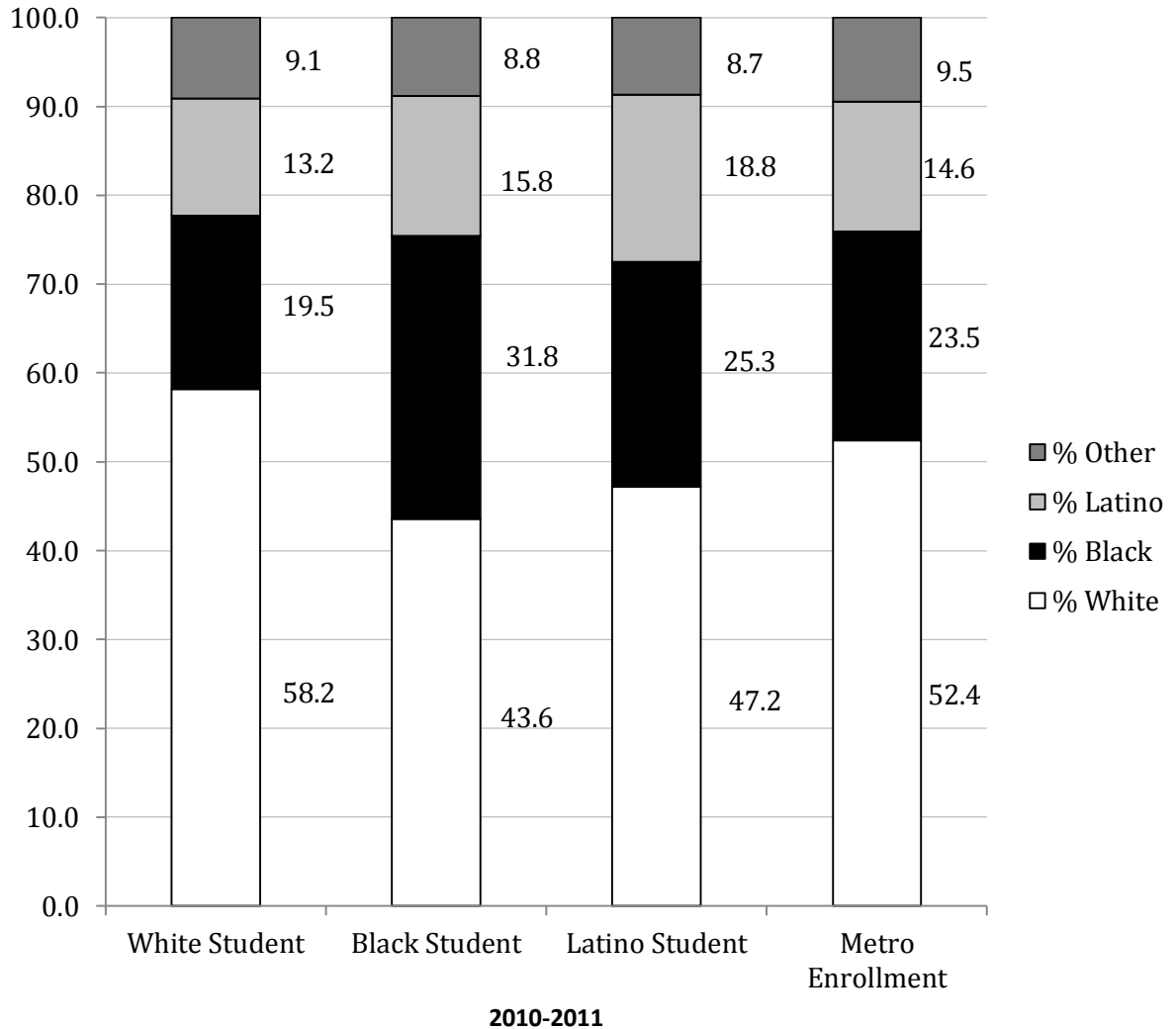
Figure 6 – *Racial Composition of School Attended by Typical Black Student, Raleigh Metro*



Source: U.S. Department of Education, National Center for Education Statistics, Common Core of Data (CCD), Public Elementary/Secondary School Universe Survey Data

- In 2010, the racial composition of the typical black student’s school was least similar to the overall racial composition of the metro’s student enrollment.
- In 2010, the typical student of each race attended a school with a disproportionately large share of same-race peers.

Figure 7 – Racial Composition of School Attended by Typical Student by Race, Raleigh Metro



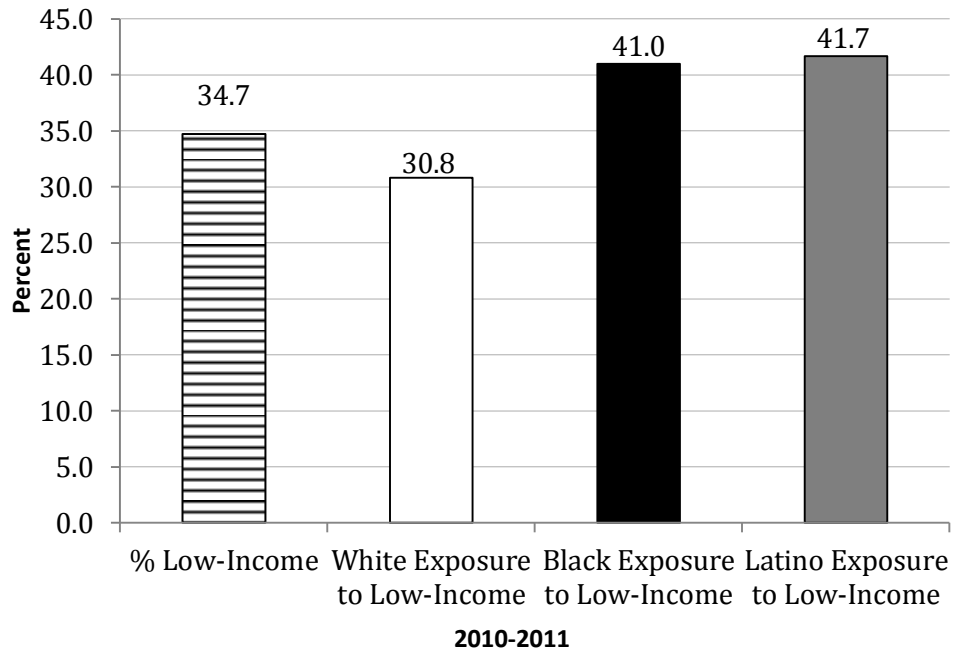
Note: Other includes American Indian students and students identifying with two or more races.

Source: U.S. Department of Education, National Center for Education Statistics, Common Core of Data (CCD), Public Elementary/Secondary School Universe Survey Data



- In 2010, the typical white student was exposed to a smaller share of low-income students than would be expected if the 34.7% of low-income students were distributed evenly across the metro’s schools.
- In 2010, the typical black student and the typical Latino student were both exposed to larger shares of low-income students than would be expected if the 34.7% of low-income students were distributed evenly across the metro’s schools.

Figure 8 – *Exposure to Low-Income Students by Race, Raleigh Metro*



Source: U.S. Department of Education, National Center for Education Statistics, Common Core of Data (CCD), Public Elementary/Secondary School Universe Survey Data

**Evenness**

- The level of segregation in metro Raleigh has increased over the last two decades but is still considered to be a low level of segregation.
- The level of segregation between school districts has remained stable while the segregation within districts has increased.

Table 4 – *Entropy Index Values, Overall and Within and Between School Districts, Raleigh Metro*

	<b>H</b>	<b>H Within Districts</b>	<b>H Between Districts</b>
<b>Raleigh Metro</b>			
1989-1990	0.07	0.05	0.02
1999-2000	0.08	0.07	0.02
2010-2011	0.10	0.08	0.02

Source: U.S. Department of Education, National Center for Education Statistics, Common Core of Data (CCD), Public Elementary/Secondary School Universe Survey Data

- The uneven distribution of white and black students was low in 1989 but increased over the last two decades, reaching a moderate level in 2010.
- In 2010, the uneven distribution of white and Latino students was at a low level, bordering on being considered moderate.
- The uneven distribution of black and Latino students was low in 2010.

Table 5 – *Differential Distribution (Evenness) of Two Racial Groups Across Public Schools, Raleigh Metro*

	<b>Dissimilarity Index</b>					
	<b>White Black</b>	<b>White Asian</b>	<b>White Latino</b>	<b>Black Asian</b>	<b>Black Latino</b>	<b>Asian Latino</b>
<b>Raleigh Metro</b>						
1989-1990	.23	*	*	*	*	*
1999-2000	.28	*	*	*	*	*
2010-2011	.35	*	.28	*	.24	*

Note: \* Less than one-twentieth of a racial enrollment.

Source: U.S. Department of Education, National Center for Education Statistics, Common Core of Data (CCD), Public Elementary/Secondary School Universe Survey Data